

# EXHIBIT J



**D/F FREE-STANDING PYLON**  
NTS

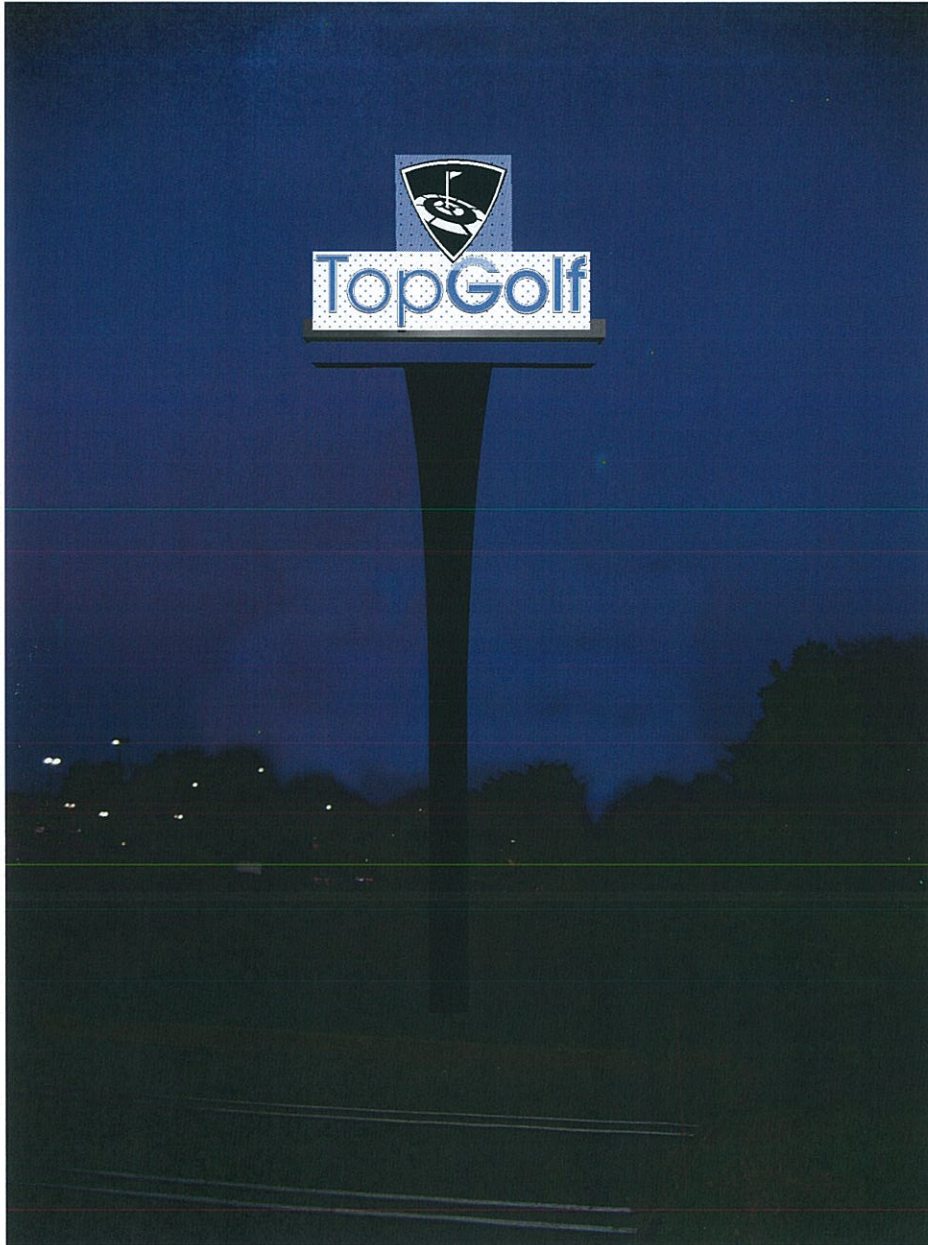


# EXHIBIT J



D/F FREE-STANDING PYLON  
NTS

# EXHIBIT J



**D/F FREE-STANDING PYLON (NIGHT)**

NTS

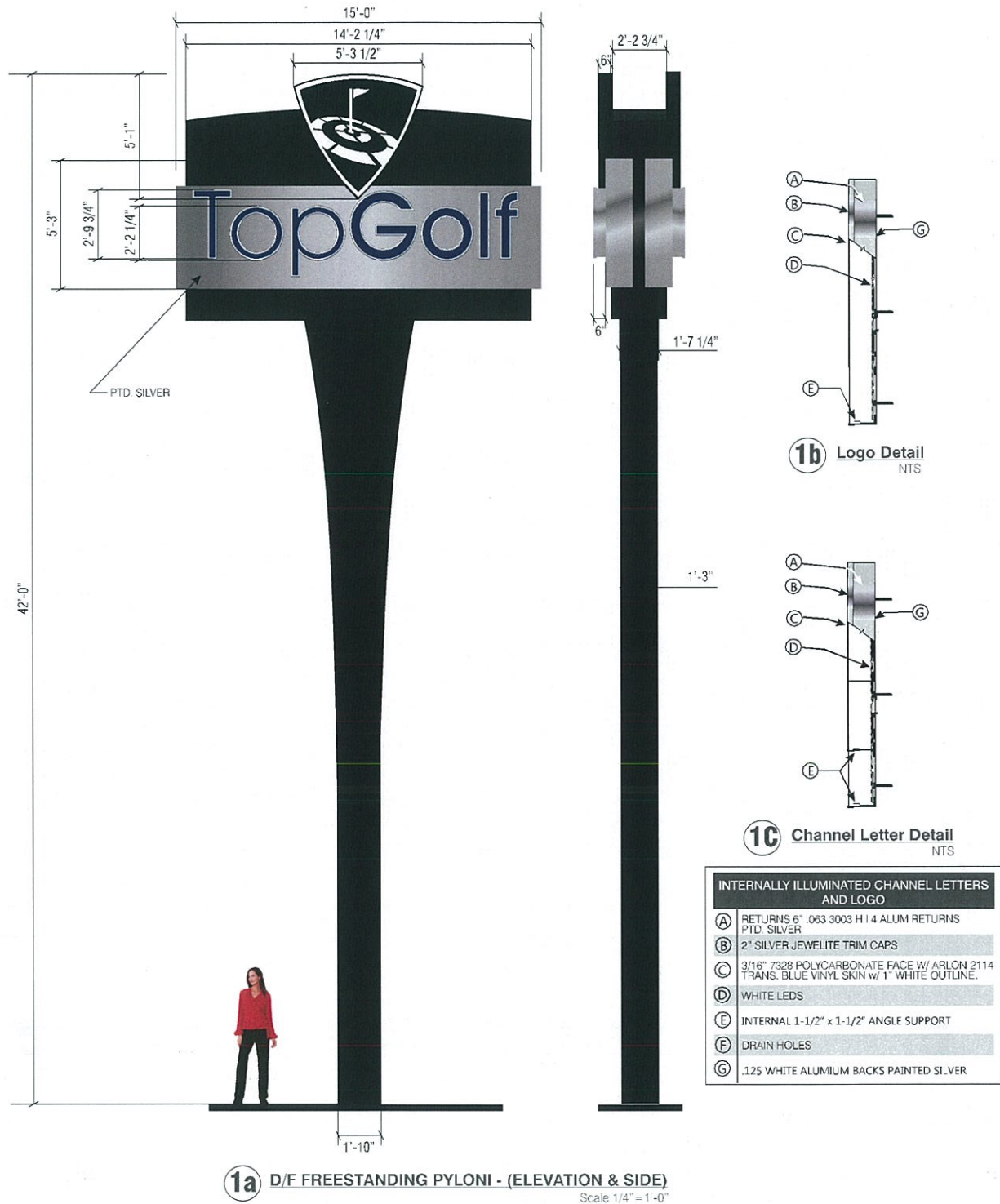
SHEET	REVISION	DATE	BY	CHKD	APP'D	DESCRIPTION
3	1					

<p>TOP GOLF 560 SPRING PARK CENTER BLVD. SPRING, TX 77379</p>	<p>1/18/14</p> <p>210A Progress Drive Malvern, PA 19354</p> <p>PH: 267-268-6575 FX: 267-335-0577 www.cimnetwork.com</p>	<p><b>CIMANETWORK</b> signage &amp; environmental branding</p>
---	---	--



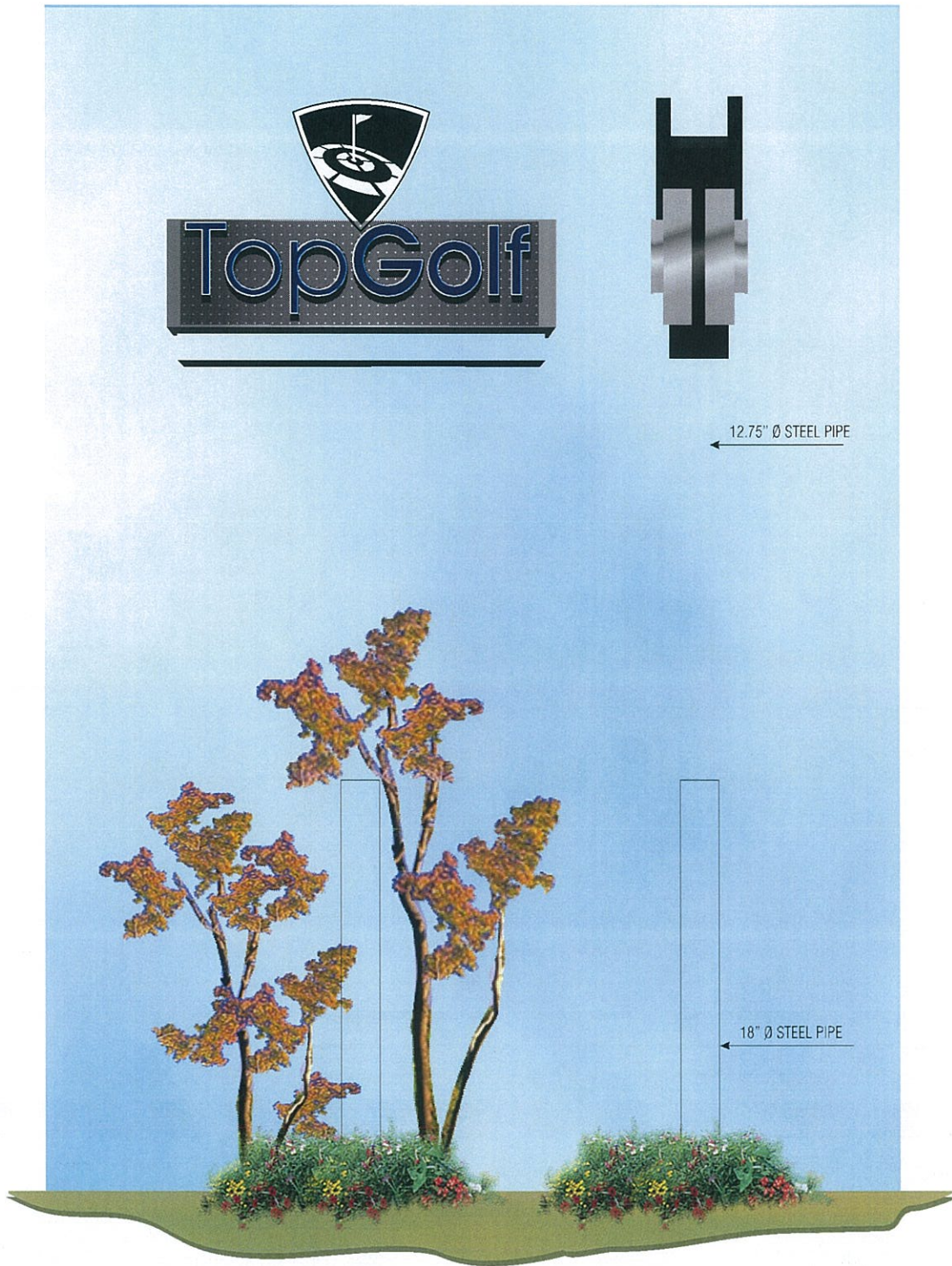
# EXHIBIT J



# EXHIBIT J

OPTION

TELESCOPIC POLE INSTALLATION



D/F FREE-STANDING PYLON  
NTS



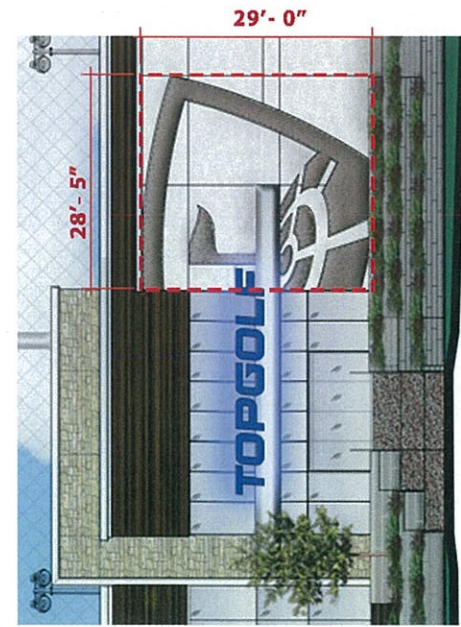
# EXHIBIT J



SIGN SQUARE FOOTAGE: 35 SF.



FRONT ELEVATION: **18,712 SF. TOTAL**



SHIELD LOGO: **824.08 SQ. SF. TOTAL = 4% OF ELEVATION**

EXTERIOR SIGN: **98 SQ. SF. TOTAL = 1% OF ELEVATION**

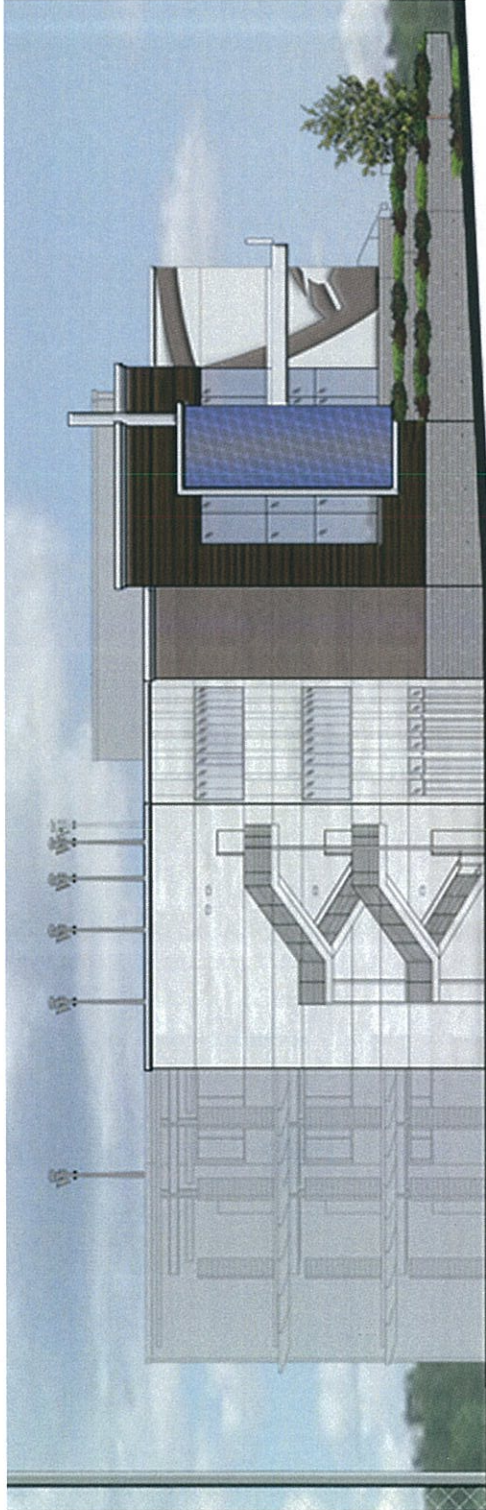
FRONT ELEVATION SIGNAGE  
 (824 SQ. FT.+98 SQ. FT.)/18,712 SQ. FT.=.049  
 5% TOTAL OF ELEVATION

**EXHIBIT J**

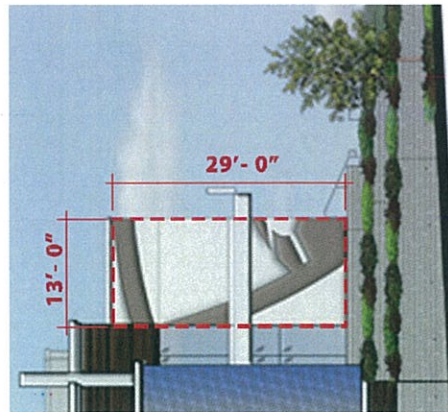
- EXTERIOR SIGN:
- FRONT LIT CHANNEL LETTERS MOUNTED TO CANOPY
- FONT: TOPGOLF APPROVED TYPEFACE
- FACE: 3/16" 7328 WHITE POLYCARBONATE FACE W/ ARLON 2114 TRAY
- BLUE VINYL SKIN 1" WEDED OUTLINE
- RETURNS: 6" .063 3003 H14 ALUM. RETURNS PTM SILVER
- TRIM CAPS: 2" SILVER JEWELITE TRIM CAPS
- BACKS: .063 WHITE ALUMINUM PAINTED SILVER
- EXTERNAL GUSSETS: 1/8" 5052 ALUMINUM W/ 2" FLANGES ON ALL SIDES
- INTERNAL GUSSETS: 1/8" 5052 ALUMINUM CUT TO LETTER SHAPE AT BOTTOM
- ANCHORS: 3/8" DIA X 5" GALVANIZED LAG BOLTS
- ILLUMINATION: WHITE LEDS-G0Q3 6-7000K
- MOUNTING: MOUNTED TO BUILDING CANOPY W/ NON-CORROSIVE HARDWARE AND CUSTOM GUSSETS AS REQUIRED. ALL PENETRATIONS SEALED W/ CLEAR SILICONE. DRILL POWER HOLES AND ATTACH GUSSETS IN THE FIELD, PROVIDE SS BOLTS
- EXTERIOR WALL GRAPHIC: SHIELD ART CRAFTED IN TWO TONE EIFS.



# EXHIBIT J



SIDE ELEVATION: **3,823 SQ.FT. TOTAL**



EXTERIOR SHIELD LOGO: **377 SF. TOTAL**

SIDE ELEVATION SIGNAGE  
377 SQ.FT./3,823 SQ.FT.=.099  
**10% OF ELEVATION**

EXTERIOR WALL GRAPHIC:  
SHIELD ART CRAFTED IN TWO TONE EIFS